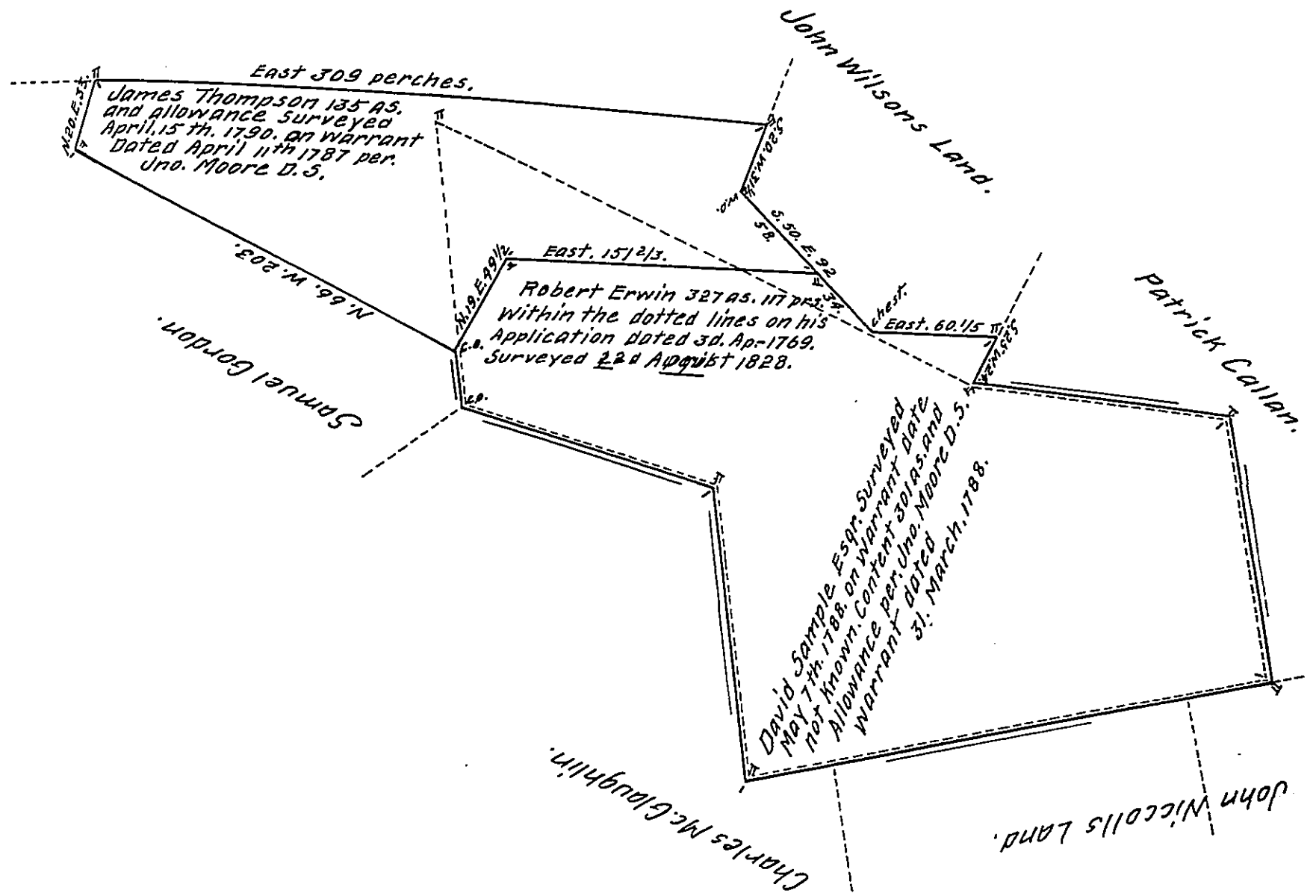


James Darrough



The above plot Shows the interference of the Survey Made in pur-  
 suance of Robt. Erwins Appn. with the Surveys Made for Messrs.  
 Sample & Thompson, the Dates Entered severally in the bodies of the  
 drafts.

S. L. Carpenter, D. S.

James Thompson not Patd.

David Sample Patented.

IN TESTIMONY that the above is a copy of the original remaining on file in  
 the Department of Internal Affairs of Pennsylvania, made  
 conformably to an Act of Assembly approved the 16th day of  
 February, 1833, I have hereunto set my Hand and caused  
 the Seal of said Department to be affixed at Harrisburg,  
 this thirteenth — day of October — 1908.

Henry Houck

Secretary of Internal Affairs.